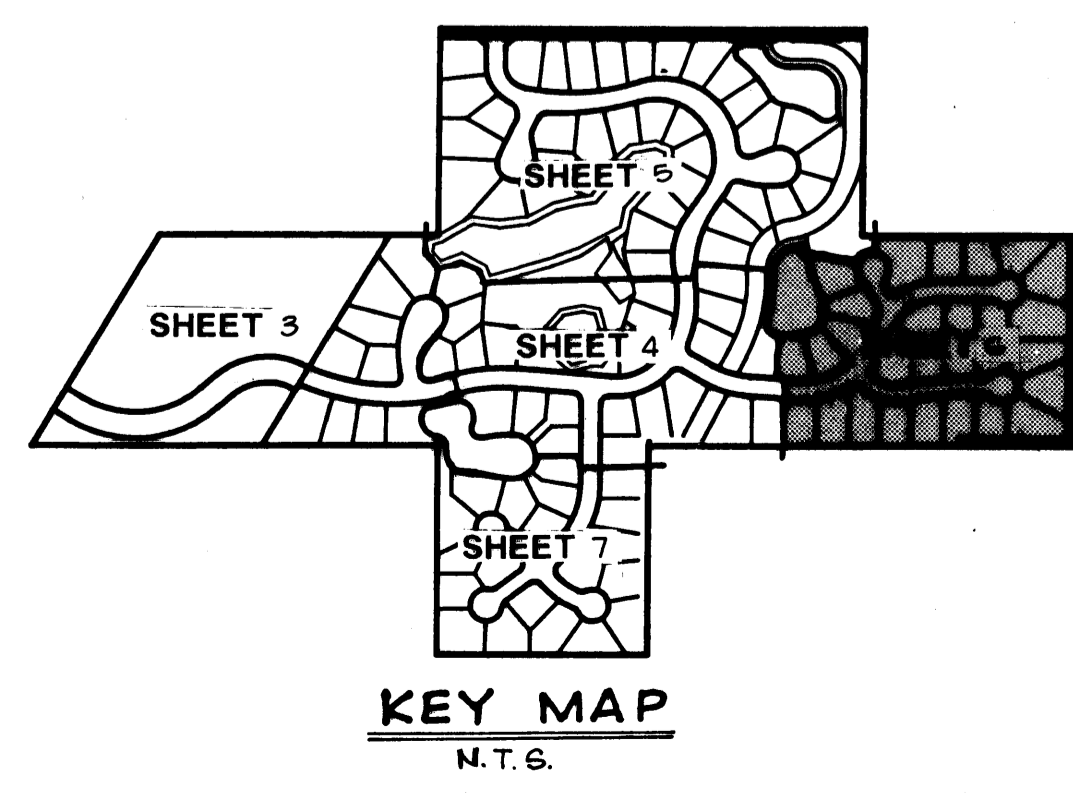
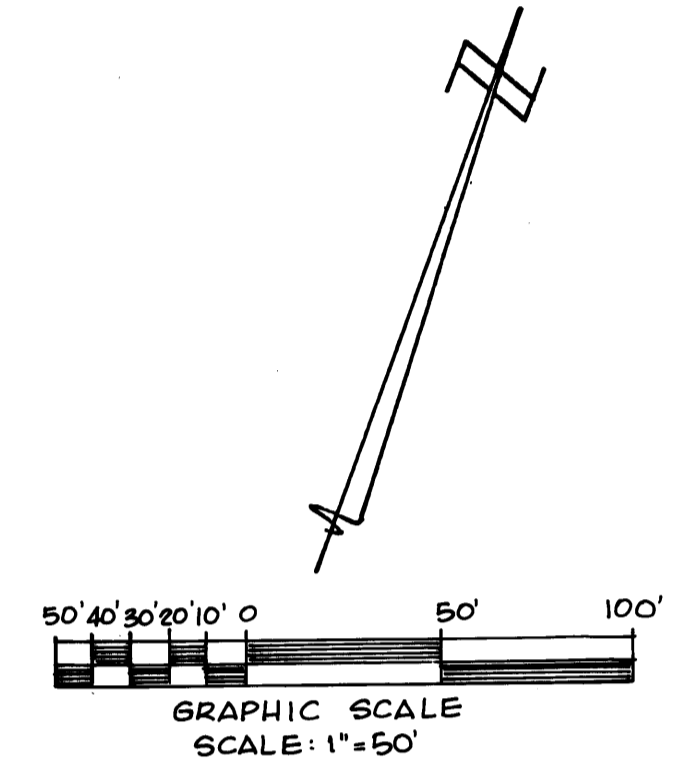
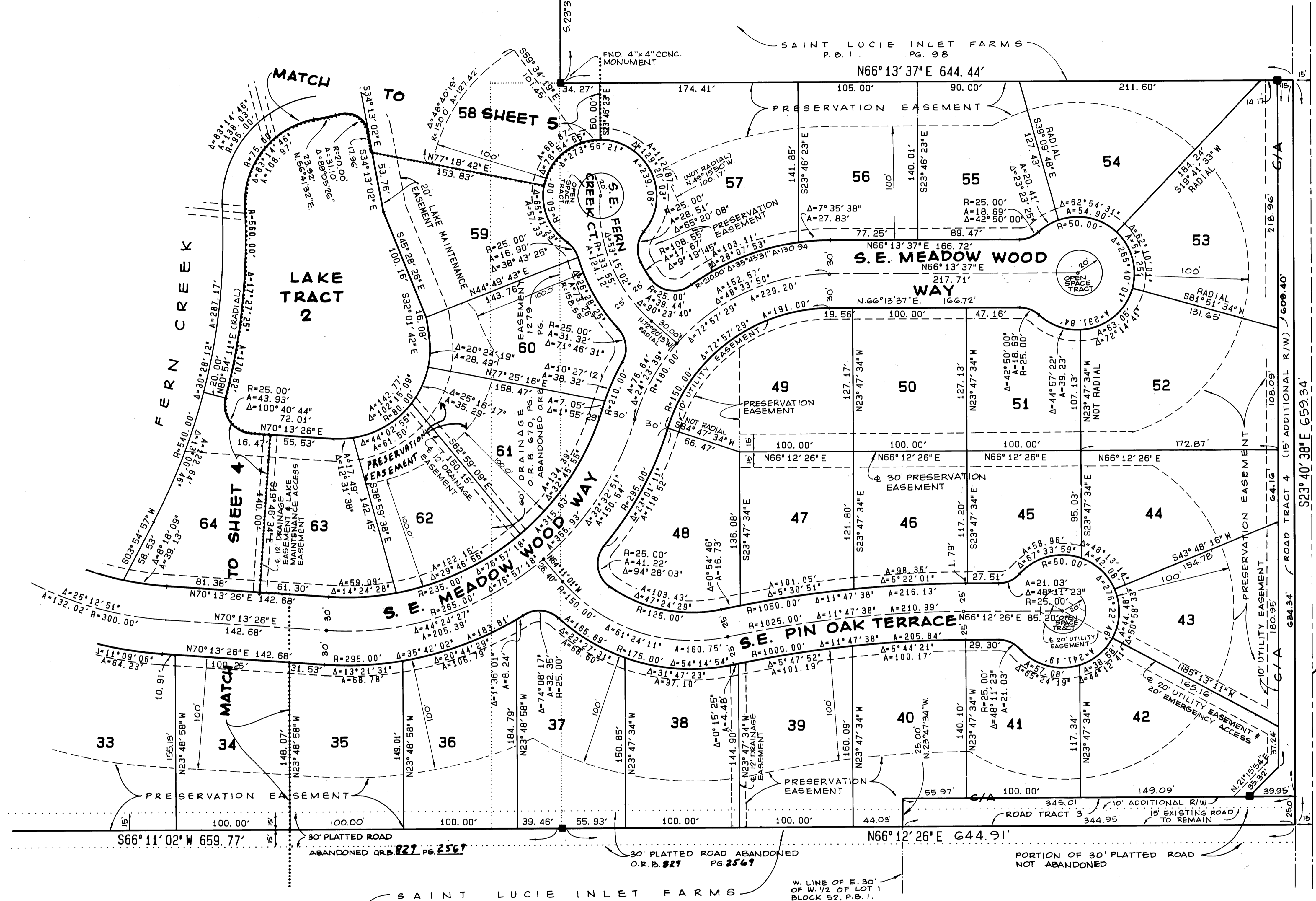


# PLAT OF SOUTHWOOD

## A PLANNED UNIT DEVELOPMENT

BEING A REPLAT OF LOTS 2,3,6,7, & 8, BLOCK 51, LOT 3, BLOCK 52, AND A PORTION OF LOT 5, BLOCK 51, AND A PORTION OF LOT 8, BLOCK 46, PLAT OF SAINT LUCIE INLET FARMS, PLAT BOOK I, PAGE 98, PUBLIC RECORDS OF MARTIN COUNTY, FLORIDA  
HANSON GRANT, MARTIN COUNTY, FLORIDA

Plat Book 12  
Page 28



NOTES

- DENOTES SET P.C.P.
- DENOTES SET P.R.M.

ADAIR & BRADY, INC. CONSULTING ENGINEERS & LAND SURVEYORS STUART, FLORIDA			SOUTHWOOD, A P.U.D. Record Plat	
Dr. A.M.	F.B.	Scale 1"=50'	FP S-077	SHEET 6 OF 7
Ck. G.W.	P.G.	Date SEPT. 89		
Ap. dp		Job No. 87520		